

Pleiades

♩ = 260

Intro G-7 Bb7 Eb7 D7alt C7 Bb7 A7alt Ab7 Open

Collective Improv. Build up to melody

A G-7 Bb7 Eb7 D7alt C7 Bb13 Aø7 Ab7

G-7 Bb7 Eb7 D7alt C7 Bb13 Aø7 Ab7

G-7 Bb13 Eb7 D7alt C7 Bb13 Aø7 Ab7

G-7 Bb13 Eb7 D7alt C7

B FΔ7 D-7 C13 A-7 FΔ7 D-7 C13 A-7

FΔ7 D-7 C13 A-7 FΔ7 D-7 C13 A-7

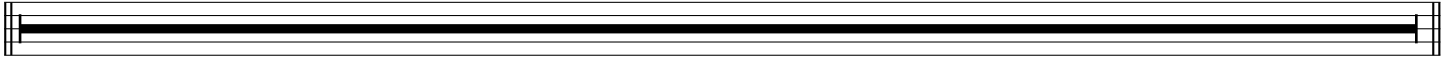
G-7 Bb13 Eb7 D7alt C7 Bb13 Aø7 Ab7

G-7 Bb13 Eb7 D7alt C7

Drum Fill (2 bars) ...

C

8



Drum Solo (in time)

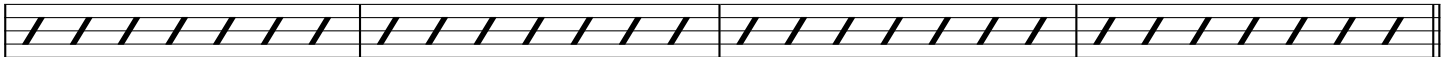
D Bb13 D-13 G-11 E7/G# A-9 Eb13 D9 B7alt 2x

Solo Transition Line (Solos overlap)

E Bb13 D-13 G-11 E7/G# A-9 Eb13 1. D9 B7alt 2. D9

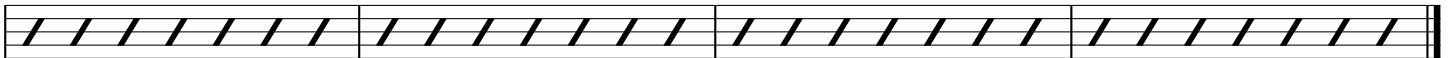
F G-7 C#13b9 C13sus4 F-7 D7/F# 3x

G-7 A-7 Bb7 G7/B C13sus4



G FΔ7 D-7 C7 A-7 FΔ7 D-7 C7 A-7

FΔ7 D-7 C7 A-7 FΔ7 D-7 C7



Repeat to D for new Solo
D.C. al Coda

Bb13 D-13 G-11 E7/G# A-9 Eb13 D9 B7alt

In Time ...

Bb13 D-13 G-11 E7/G# A-9 Eb13 D9 B7alt G-11

All Together ...

Fine